

Empire Court, Borehamwood

£295,000 (Leasehold)



This stunning 1 bed apartment sits on the 4th floor of this beautiful development. The property boasts a large open plan living/dining/kitchen room, good size master bedroom family bathroom and two storage cupboards. Uniquely the apartment offers TWO separate balconies accessed via the kitchen and master bedroom offering further space with a view. Other benefits include secure underground parking space, ample visitor parking and landscaped communal gardens.

020 3764 2222
www.village-estates.co.uk



Village Estates
The Corner Shop High Street, Elstree
Herts WD6 3BY

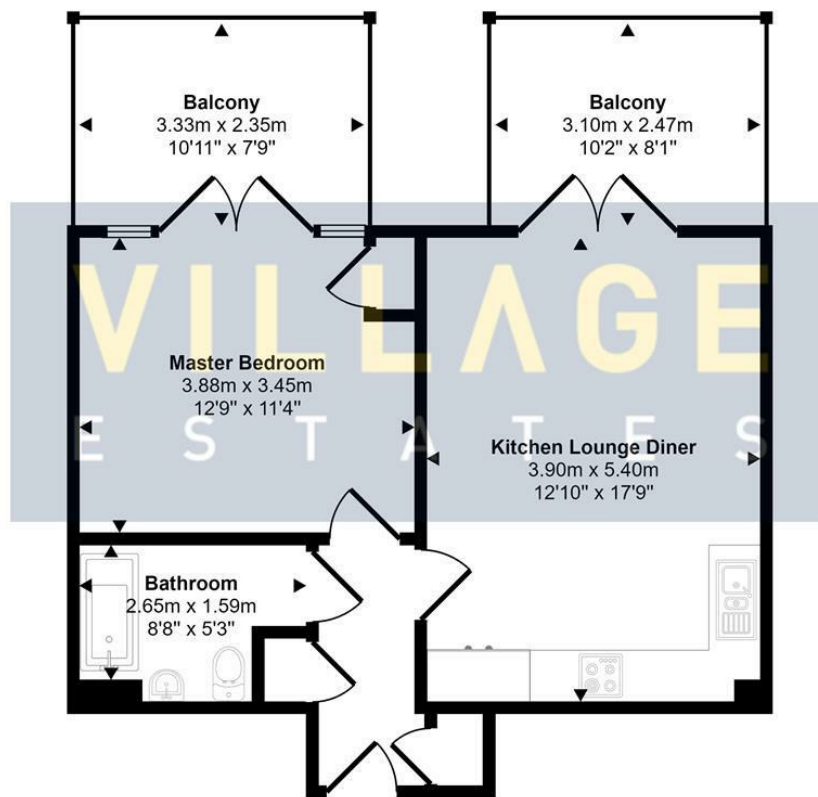
Important Note: These particulars do not form part of any contract. All measurements are approximate and should not be relied upon. All prices quoted are strictly subject to contract.







Approx Gross Internal Area
45 sq m / 485 sq ft



Floorplan

This floorplan is only for illustrative purposes and is not to scale. Measurements of rooms, doors, windows, and any items are approximate and no responsibility is taken for any error, omission or mis-statement. Icons of items such as bathroom suites are representations only and may not look like the real items. Made with Made Snappy 360.



Available on the
App Store



ANDROID APP ON
Google play

Energy Efficiency Rating		Current	Potential
Very energy efficient - lower running costs			
(92 plus)	A		
(61-91)	B	83	83
(69-80)	C		
(55-68)	D		
(39-54)	E		
(21-38)	F		
(1-20)	G		
Not energy efficient - higher running costs			
England & Wales		EU Directive 2002/91/EC	